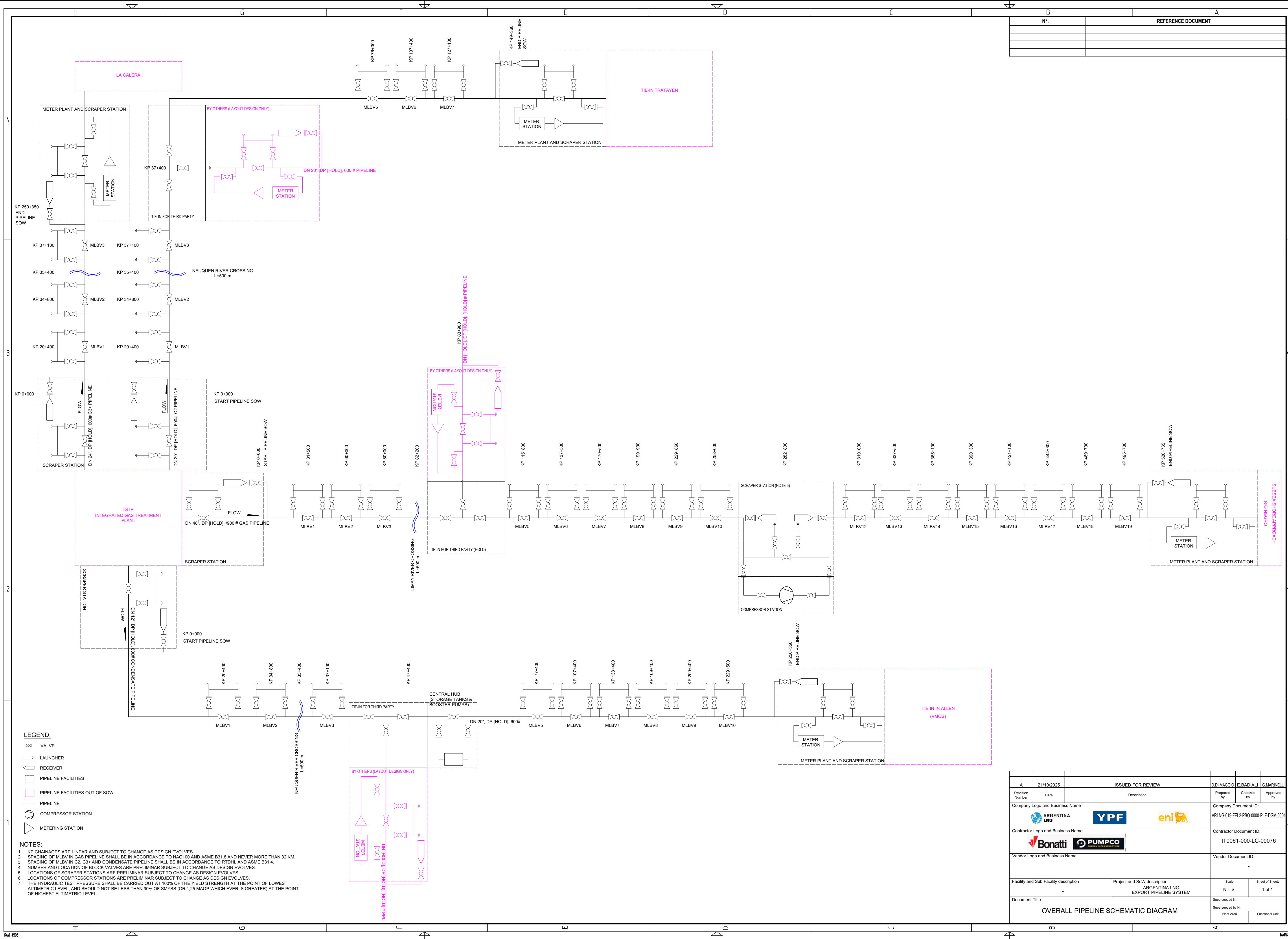







All technical information contained in this document is the exclusive property of YPF. Any reproduction, distribution, or use of this document without the written consent of YPF is strictly prohibited. The design and engineering shown herein are preliminary and subject to change without notice. The design and engineering shown herein are preliminary and subject to change without notice. The design and engineering shown herein are preliminary and subject to change without notice.



A	21/10/2025		ISSUED FOR REVIEW			D. DI MAGGIO		E. BADIALI	G. MARINELLI
Revision Number	Date		Description			Prepared by		Checked by	Approved by
Company Logo and Business Name						Company Document ID:			
<div> ARGENTINA LNG</div> <div> YPF</div> <div> eni</div>						ARLNG-019-FEL2-PBO-0000-PLF-DGM-0001			
Contractor Logo and Business Name						Contractor Document ID:			
<div> Bonatti</div> <div> PUMPCO</div>						IT0061-000-LC-00076			
Vendor Logo and Business Name						Vendor Document ID:			
						-			
Facility and Sub Facility description			Project and SoW description			Scale		Sheet of Sheets	
-			ARGENTINA LNG EXPORT PIPELINE SYSTEM			N.T.S.		1 of 1	
Document Title						Superseded N.			
OVERALL PIPELINE SCHEMATIC DIAGRAM						Superseded by N.			
						Plant Area		Functional Unit	